



Sailing Instructions V1 27/06/2025

CHANGES TO SAILING INSTRUCTIONS

- 1.1 Any changes to the Sailing Instructions made prior to the pre-race briefing will be notified at the briefing and posted on the Official SSANZ Noticeboard on the website.
- 1.2 For all subsequent changes, "L" Flag (A notice to competitors has been posted) will be displayed and any change will be announced verbally to yachts during the check in period via VHF CHANNEL 77 prior to the start and posted on the Official SSANZ Noticeboard on the website.
- 1.3 The notation **[DP]** in a rule means that the penalty for a breach of the rule may, at the discretion of the protest committee, be less than disqualification. This changes RRS 64.2.
The notation **[SP]** in a rule of the SIs means that a standard penalty may be applied by the race committee without a hearing. This changes RRS 63.1.

SCHEDULE OF EVENTS

- 2.1 Briefing: Thursday 10th July 2025 7pm - at the RNZYS
- 2.2 Racing Schedule:
 - Lewmar 60 - Saturday 12th July 2025
 - Lewmar 100 - Saturday 9th August 2025
 - Lewmar 50 - Saturday 6th September 2025
- 2.3 Prize Giving – Friday 10th October 2025

CLASS FLAGS AND DIVISIONS

- 3.1 Division pennants shall be flown from the backstay or port shroud if no backstay is fitted.
- 3.2 Division flag shall be a minimum size of 200mm x 200mm.
- 3.3 Failure to exhibit the division flag may render a yacht being recorded as "Did Not Start".
- 3.4 Start time table:

Division	Class	Start	Flag
Wealthpoint 1	Monohull >28ft - PHRF	0900-Start Alpha	Yellow
Wealthpoint 2	Monohull Small Boat <28ft - PHRF	0900-Start Alpha	Green/White
Wealthpoint PP	Pied Piper	0900-Start Bravo	PP Class Flag
ALL Boats in the Wealthpoint Divisions will start under the Wealthpoint Flag			
New World Victoria Park 1	Monohull Non-Sportsboat PHRF	0915-Start Alpha	Royal Blue
New World Victoria Park 2	Monohull Sportsboat PHRF	0915-Start Alpha	Light Blue
New World Victoria Park 88	Young 88	0915-Start Bravo	Y88 Class Flag
ALL Boats in the New World Victoria Park Divisions will start under the New World Victoria Park Flag			
Doyle Sails 1	Monohull PHRF .860 and above	0930-Start Alpha	White
Doyle Sails 2	Monohull PHRF .700 to .859	0930-Start Alpha	Green
Doyle Sails 3	All Multihulls	0930-Start Bravo	White/Yellow
ALL Boats in the Doyle Sails Division will start under the Doyle Sails Flag			
Wealthpoint 3	Monohull - No Extras without PHRF	0945-Entire Line	Pink
ALL Boats in Wealthpoint 3 will start under a Pink Flag			

MARKS AND COURSES

- 4.1 The Race Officer has the right to alter any course for any division on the day of racing up until the preparatory signal for that division, this will be advised by flying the "L" Flag.
(A notice to competitors will be posted and there may be verbal instruction on VHF 77).
- 4.2 **Lewmar 60 - Doyle Sails Course 1:** approx. 61 nm
Start, rounding Rangitoto (S), Awash Rock Rakino (P), Otata Island (Noises) (P), Flat Rock (P), Motuora Island (P), passing Tiritiri Island (S), rounding Northern Leading Buoy (S) to Finish
- Lewmar 60 - New World Victoria Park Course 4:** approx. 52 nm
Start, rounding Rangitoto (S), Haystack (P), Motuora Island (P), passing Tiritiri Island (S), Northern Leading Buoy (S), to Finish
- Lewmar 60 - Wealthpoint Course 7:** approx. 36 nm
Start, rounding Rangitoto (S), Awash Rock Rakino (P), Otata Island (Noises) (P), Shearers Rock Cardinal Buoy (P), Northern Leading Buoy (S), to Finish
- 4.3 **Lewmar 100 - Doyle Sails Course 2:** approx. 105 nm
Start, passing Rangitoto (S), rounding Motuora Island (S), Tiritiri Matangi Island (P), Flat Rock (S), D'Urville Rock (P), Motutakupu (Gannet) Island (S), passing Waiheke Island (P), Motutapu Island (S), Northern Leading Buoy (P) to Finish.
- Lewmar 100 - New World Victoria Park Course 5:** approx. 64 nm
Start, passing Rangitoto (S), rounding Flat Rock (S), Horuhoru (Gannet) Rock (S), passing Waiheke Island (P), passing Motutapu Island (S), Northern Leading Buoy (P) to Finish.
- Lewmar 100 - Wealthpoint Course 8:** approx. 44nm
Start, passing Rangitoto (S), passing Rakino Island (S), D'Urville Rock (P), Horuhoru (Gannet) Rock (S), Waiheke Island (P), Motuihe Island (S), Browns Island (P), Northern Leading Buoy (P) to Finish.
- 4.4 **Lewmar 50 - Doyle Sails Course 3:** approx. 55 nm
Start passing Waiheke Island (S), Cow and Calf Islands (S), Pakatoa Island (P), Waiheke Island (S), passing Motuihe Island (S), to Finish (Islington Bay entrance).
- Lewmar 50 - New World Victoria Park Course 6:** approx. 40 nm
Start passing Waiheke Island (S), Tarahiki (Shag) Island (S), Pakatoa Island (P), Waiheke Island (S), passing Motuihe Island (S), to Finish (Islington Bay entrance).
- Lewmar 50 - Wealthpoint Course 9:** approx. 30 nm
Start passing Motutapu (P), rounding Motuhoropapa Island (The Noises) (S), Ahaaha Rocks (S), D'Urville Rock (S), Motuihe Island (S) to Finish (Islington Bay area)

- 4.5 In the case of unfavourable weather, the SSANZ Committee Boat mayfly Code Flag S, in which case some or all divisions shall sail a short course. Divisions to sail the Short Course will be advised which short course from the list below prior to the start on VHF Ch 77.

Short Courses:

Lewmar Short Course 10: approx. 44 nm

Start passing Rangitoto (S) rounding Navy Buoy Whangaparaoa (S), D'Urville Rock (S), Motuihe Island (S), Northern Leading Buoy (P), Finish

Lewmar Short Course 11: approx. 34 nm

Start passing Rangitoto Island (S), rounding Rakino Island (S), D'Urville Rock (S), Motuihe Island (S), Northern Leading Buoy (P), Finish

Lewmar Short Course 12: approx. 25 nm

Start passing Rangitoto Island (S), rounding Rakino Island (S), Motuihe Island (S), Northern Leading Buoy (P), Finish

Lewmar Short Course 13: approx. 21 nm

Start passing Rangitoto Island (S), rounding Motutapu Island (S), Northern Leading Buoy (P), Finish

Lewmar Short Course 14: approx. 33 nm

Start, passing Motutapu (P), rounding D'Urville Rock (P) Motuhoropapa Island & Otata Island (The Noises) (P), Rakino Island (P), passing Motutapu Island (S), Northern Leading Buoy (P), Finish

Lewmar Short Course 15: approx. 30 nm

Start, passing Browns Island Beacon (S), rounding Motuihe Island (P), D'Urville Rock (P), passing Motutapu Island (S), Northern Leading Buoy (P), Finish

Lewmar Short Course 16: approx. 24 nm

Start, passing Browns Island Beacon (S), rounding Rocky Bay Buoy (P), Motuihe Island (P), Northern Leading Buoy (P), Finish

Lewmar Short Course 17: approx. 15 nm

Start, passing Browns Island Beacon (S), Motuihe Island (P), Northern Leading Buoy (P), Finish

Lewmar Short Course 18: approx. 10 nm

Start, passing Browns Island Beacon (S), Browns Island Navy Buoy (P), Iliomama Buoy (P), Northern Leading Buoy (P), Finish

- 4.6 New World Victoria Park 88 Young 88 division will race the following courses, always starting off the New World Victoria Park Start

Lewmar 60 - New World Victoria Park Course

Lewmar 100 - Wealthpoint Course

Lewmar 50 - New World Victoria Park Course

- 4.7 Doyle Sails M division All Multihulls will race the following courses, always starting off the Doyle Sails Start.

Lewmar 60 - Doyle Sails Course

Lewmar 100 - New World Victoria Park Course

Lewmar 50 - Doyle Sails Course

THE START

- 5.1 Races will be started using RRS 26 with the warning signal made 5 (five) minutes before the starting signal.
- 5.2 The start line will be between a staff displaying an orange flag on the SSANZ Committee Boat and the Northern Leading Harbour Racing Buoy, with the SSANZ Buoy* splitting the line to form 2 sections. The Committee boat will be at the starboard end of the line.
Start Alpha (A) will be between the SSANZ Committee Boat and the laid SSANZ Buoy.
Start Bravo (B) will be between the SSANZ Buoy and the Northern Leading Harbour Racing Buoy.
*The SSANZ Buoy splits the line but does not form part of the line transit.
- 5.3 Inner distance mark (IDM): If laid, yachts shall not pass between the IDM and the SSANZ Committee Boat at any time.
- 5.4 Boats whose warning signal has not been made shall avoid the starting area during the starting sequence for other divisions.
- 5.5 A yacht starting later than 30 minutes after their starting signal will be scored Did Not Start (DNS). This changes RRS A4 and A5.
- 5.6 If a recall is signalled, the Race Committee may attempt to broadcast a yacht's name and/or sail number on VHF Channel 77. Failure to make a broadcast will not be grounds for a request for redress. This changes RRS 62.1(a).
- 5.7 The Race Officer may abandon racing after 1500 hrs on the day for any reason.

THE FINISH

- 6.1 Lewmar60 and Lewmar100 finish line will be between a staff displaying a blue flag on the SSANZ Committee Boat with an orange strobe and Resolution Buoy (Ref Appendix B).
The finish line will be positioned approximately North to South with the finish boat at the south end of the line. (Be advised that the depth shallows rapidly south of this line).
- 6.2 Lewmar50 race finish line will be positioned off the entrance to Islington Bay between a staff displaying a blue flag on the SSANZ Committee Boat with an orange strobe and the laid Yellow SSANZ Buoy with a strobe attached. (Ref Appendix C)
The finish line will be positioned approximately Northeast to South West with the finish boat at the Northeast end of the line.
(Be advised of the shallow depth in the area East of the finish of Motutapu Island between Emu point and the finish).
- 6.3 It is each yacht's responsibility to identify itself and be acknowledged by the race committee when finishing. At night yachts must illuminate their sail numbers.
You must take your own time using GPS time if you are unable to get an acknowledgement from the Race Committee.
This time will need to be emailed to racing@ssanz.co.nz as soon as possible after finishing.
The email must include your Boat Name and Sail Number with your finish time, and if possible, the time and name of a boat finishing near you.

TIME LIMITS

- 7.1 Lewmar 60 0800 hrs Sunday 13th July 2025
Lewmar 100 1000 hrs Sunday 10th August 2025
Lewmar 50 2200 hrs Saturday 6th September 2025
- 7.2 Boats not finishing within the time limits will be scored Did Not Finish. This changes RRS 35 and A4.
- 7.3 If the start is postponed, the time limits above will be extended by the amount of the postponement period.

RACE POSTPONEMENTS

- 8.1 The Race Officer may postpone by any amount of time that they see fit.
- 8.2 The Race Officer may also make a postponement whereby the start will not take place before a certain time.
- 8.3 In the event a postponement is made more than 3 hours before the first scheduled start, this will be announced on VHF Channel 77 and posted on the SSANZ Official Noticeboard on the website.

SAFETY REGULATIONS

- 9.1 All forms of navigational aids, GPS, radar, autopilots, etc are permitted. GPS should be regarded as a navigational aid, not a navigational system.

EQUIPMENT AND EQUIPMENT CHECKS

- 10.1 A boat or equipment may be inspected at any time for compliance with the class rules, sailing instructions and safety certificates. On the water, a boat can be instructed by a Race Committee Equipment Inspector or Measurer to proceed immediately to a designated area for inspection.

RADIO REGULATIONS

- 11.1 All yachts MUST identify themselves as starters to the Race Officer by calling SSANZ Sports Radio on Channel 77 prior to the start and must receive acknowledgement from the race committee.
If there is an issue with Channel 77, competitors may be required to use Channel 04.
- 11.2 SSANZ will monitor Channel 77 from 0730 until 10 minutes after the last start, and again during the finishing of all competitors.
- 11.3 You will receive a race day text from SSANZ for each of the races
All boats are required to reply to the SSANZ text after passing and/or rounding the marks identified below.
Your reply must contain MARK and the mark number you have rounded. For example 'Mark 1'.
If there is no cellphone coverage at the required report position, text as soon as you have coverage.
You will receive a confirmation text back from SSANZ.
In the event you cannot text or do not receive a response from SSANZ you are required to call Coast Guard on VHF 64 or 60 and file a position report.

Lewmar 60 - Doyle Sails Course

Lewmar 60 - New World Victoria Park Course

Lewmar 60 - Wealthpoint Course

Mark 1 - Flat Rock

Mark 1 - Motuora Island

Mark 1 - Shearers Rock Cardinal Buoy

Lewmar 100 - Doyle Sails Course

Lewmar 100 - New World Victoria Park Course

Lewmar 100 - Wealthpoint Course

Mark 1 - Flat Rock, Mark 2 - Motutakupu (Gannet) Is.

Mark 1 - Flat Rock, Mark 2 - Horuhoru (Gannet) Rock

Mark 1 - Horuhoru (Gannet) Rock

Lewmar 50 - Doyle Sails Course

Lewmar 50 - New World Victoria Park Course

Lewmar 50 - Wealthpoint Course

Mark 1 - Cow & Calf Islands

Mark 1 - Tarahiki (Shag) Island

Mark 1 - D'Urville Rock

Short course - Not Applicable

- 11.4 [SP] All boats are required to call SSANZ Sports Radio on VHF 77 on the approach to Northern Leading Racing Buoy - This call is not required for the Lewmar 50 race.
- 11.5 [SP] All boats must call SSANZ Sports Radio on VHF Channel 77 while on final approach to the finish.
- 11.6 A boat that retires from a race shall notify SSANZ via a RETIRED text message, a call to Coastguard on VHF channel 64 or 60 or alternately by phoning the Race Officer as soon as possible after retiring
- 11.7 [SP] Yachts failing to comply with all reporting requirements will receive a 5% time penalty for every report they do not complete.
- 11.8 Voicemails and text will not satisfy communication requirements for any race, unless they have been acknowledged with a reply from SSANZ.
- 11.9 A yacht shall not receive radio communications that are not available to all yachts. This restriction applies to mobile telephones. Boats are permitted to communicate with the media for the purpose of publicity and promotion but not to gain information to help their performance.
- 11.10 ALL YACHTS shall maintain a watch on VHF Channel 16 while racing.

TRASH DISPOSAL

- 12.1 Boats shall not put rubbish in the water.

ENGINE USE

- 13.1 No yacht shall be under power or tow after their Preparatory Signal.
- 13.2 Yachts are permitted to run their engines during the race for the purpose of charging batteries or other functions (i.e. canting keel, operate winches) but the engine power shall not cause the propeller to rotate.

DISCLAIMER OF LIABILITY

- 14.1 Competitors participate in all races entirely at their own risk, refer to Rule 4 of the RRS. SSANZ will not accept any liability for material damage or personal injury or death sustained in conjunction with or prior to, during or after the race.

INSURANCE

- 15.1 Each yacht shall be insured with valid third-party liability insurance with a minimum cover of \$5,000,000 per event.

TRACKING

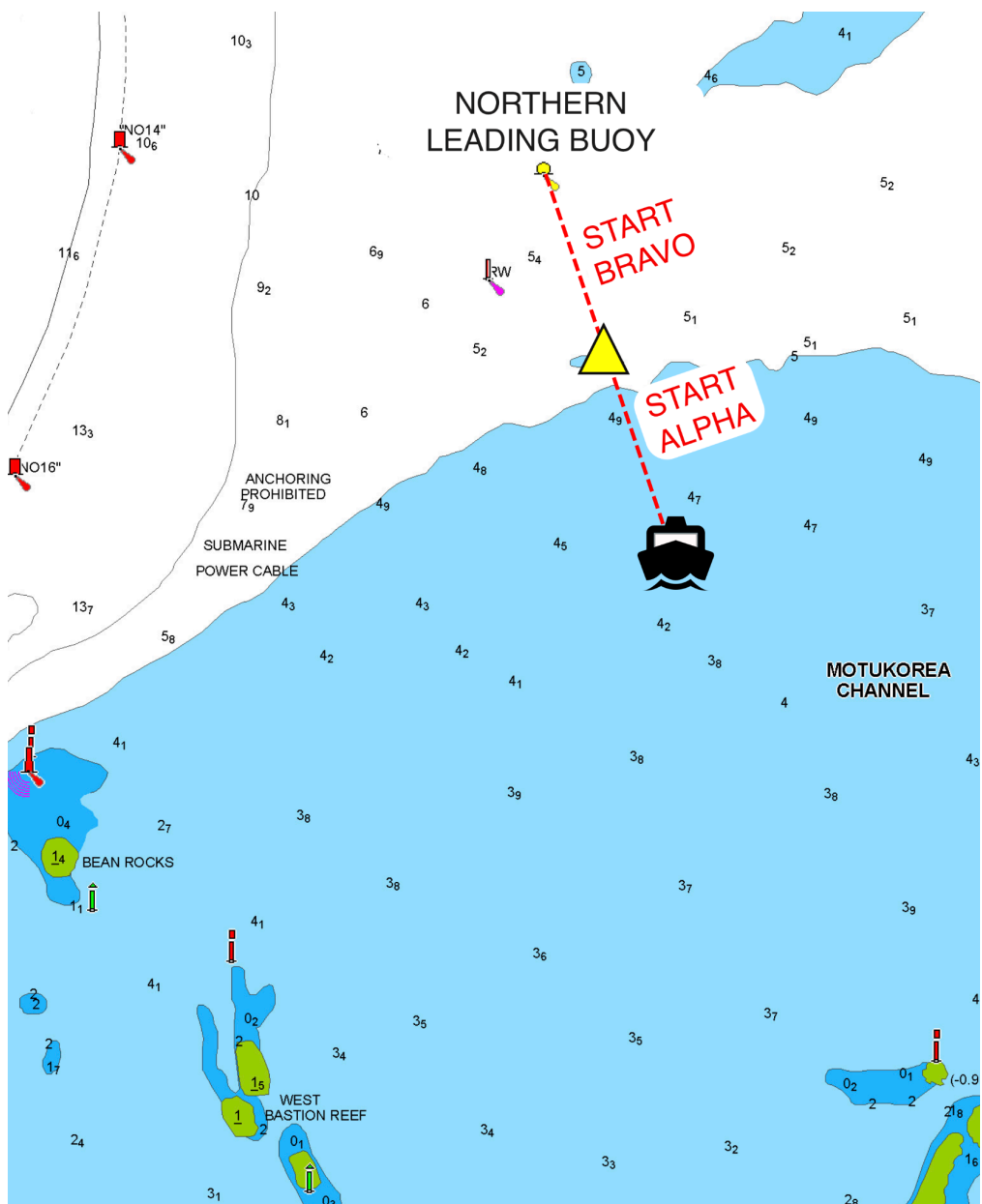
- 16.1 [DP] Yachts are required to operate a Predictwind tracker on a smartphone or similar device whilst racing.

<https://www.predictwind.com/tracker/>

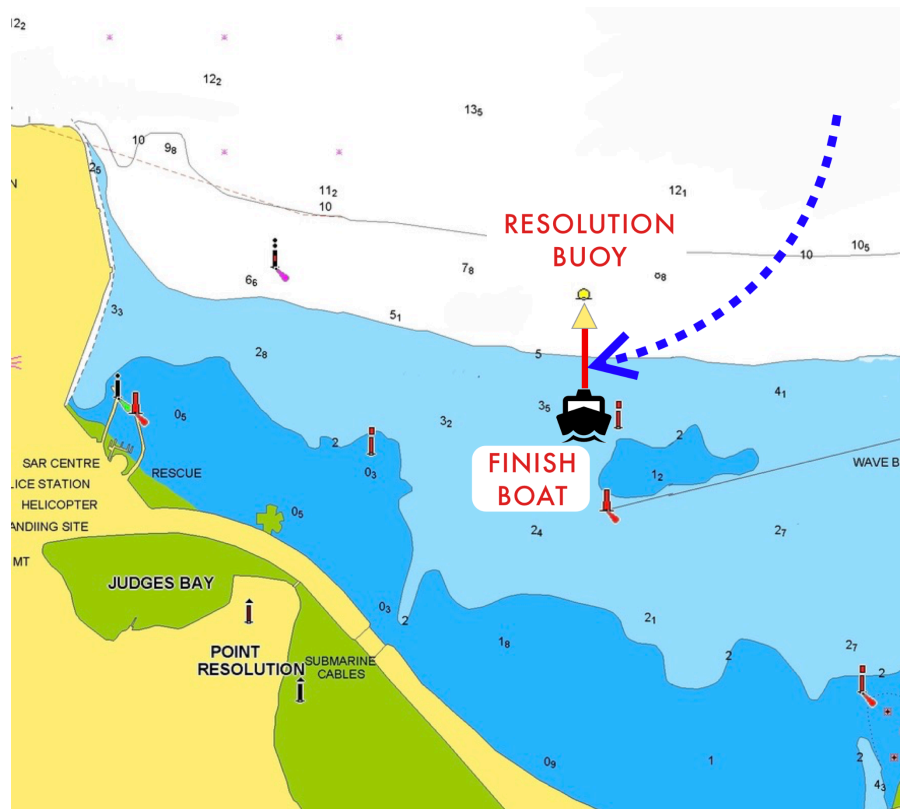
ADDITIONAL INFORMATION

Official Website:	www.ssanz.co.nz
Contact Email	racing@ssanz.co.nz
Andrew Mackmurdie (Race Officer)	Ph: 021 377 315
Nico Henry	Ph: 021 685 347
Harri Wren	Ph: 021 157 9301

Start Line



Appendix B Lewmar 60 & Lewmar 100 Finish Line



Appendix C Lewmar 50 Finish Line

