

Sailing Instructions

CHANGES TO SAILING INSTRUCTIONS

- 1.1 Any changes to the Sailing Instructions made prior to the pre-race briefing will be notified at the briefing and posted on the Official SSANZ Noticeboard on the website.
- 1.2 For all subsequent changes, "L" Flag (A notice to competitors has been posted) will be displayed and any change will be announced verbally to yachts during the check in period via VHF CHANNEL 77 prior to the start and posted on the Official SSANZ Noticeboard on the website.

SCHEDULE OF EVENTS

- 2.1 Briefing: Thursday 29th June 2023 7pm - at the RNZYS
- 2.2 Racing Schedule:
 - PIC 60 - Saturday 1st July 2023
 - PIC 100 - Saturday 29th July 2023
 - PIC 50 - Saturday 26th August 2023
- 2.3 Prize Giving – Friday 22nd September 2023

CLASS FLAGS AND DIVISIONS

- 3.1 Division pennants shall be flown from the backstay or port shroud if no backstay is fitted.
- 3.2 Division flag shall be a minimum size of 200mm x 200mm.
- 3.3 Failure to exhibit the division flag may render a yacht being recorded as "Did Not Start".

Division	Class	Start	Flag
New World Victoria Park 1	Monohull General Handicap	0900-Start Alpha	Yellow
New World Victoria Park 2	Monohull cruising (< 12.5m)	0900-Start Alpha	Pink
New World Victoria Park PP	Pied Piper	0900-Start Bravo	PP Class Flag

ALL Boats in the New World Victoria Park Divisions will start under the New World Flag

Railblaza 1	Monohull General Handicap	0915-Start Alpha	Blue
Railblaza 2	Monohull cruising (> 12.5m)	0915-Start Alpha	Green/White
Railblaza 88	Young 88	0915-Start Bravo	Y88 Class Flag

ALL Boats in the Railblaza Divisions will start under the Railblaza Flag

Beacon Marine 1	Monohull PHRF .860 and above	0930-Start Alpha	White
Beacon Marine 2	Monohull PHRF .700 to .859	0930-Start Alpha	Green
Beacon Marine 3	All Multihulls	0930-Start Bravo	White/Yellow

ALL Boats in the Beacon Marine Division will start under the Beacon Marine Flag

MARKS AND COURSES

- 4.1 The Race Officer has the right to alter any course for any division on the day of racing up until the preparatory signal for that division, this will be advised by flying the "L" Flag.
(A notice to competitors will be posted and there may be verbal instruction on VHF 77).
- 4.2 **PIC 60 - Beacon Marine Course:** approx. 67 nm
Start passing Motutapu Island (port), Tiritiri Matangi Island (starboard), Motuora Island (starboard), Gannet Rock (starboard), passing Motutapu Island (starboard), Northern Leading Harbour Racing Buoy (Port), to Finish.
- PIC 60 - Railblaza Course:** approx. 52 nm
Start passing Motutapu Island (port), TiriTiri Matangi Island (starboard), Motuora Island (starboard), The Haystack (Orarapa) (starboard), passing Motutapu Island (starboard), Northern Leading Harbour Racing Buoy (Port), to Finish.
- PIC 60 - New World Victoria Park Course:** approx. 38 nm
Start passing Motutapu Island (port), Tiri Channel Navy Buoy (starboard), The Noises (starboard), passing Motutapu Island (starboard), Northern Leading Harbour Racing Buoy (Port), to Finish.
Note: "The Noises" are defined as Otata Island and Motuhoropapa Island.
- 4.3 **PIC 100 - Beacon Marine Course:** approx. 102 nm
Start passing Motutapu Island (port), Waiheke Island (starboard), Tarahiki (Shag) Island (port), Cow and Calf Islands (port), Motupotaka (Black Rocks) (port), D'Urville Rock (starboard), Flat Rock (port), Motuora Island (port), Rangitoto Island (port), Northern Leading Harbour Racing Buoy (Stbd), to Finish.
- PIC 100 - Railblaza Course:** approx. 64 nm
Start passing Motutapu Island (port), Waiheke Island (starboard), Tarahiki (Shag) Island (port), Motuokino Island (Shag Rock) (port), The Noises (port), Rangitoto Island (port), Northern Leading Harbour Racing Buoy (Stbd), to Finish.
Note: "The Noises" are defined as Otata Island and Motuhoropapa Island.
- PIC 100 - New World Victoria Park Course:** approx. 55nm
Start passing Motutapu Island (port), Rakino Island (starboard), Gannet Rock (port), Shearers Rock Cardinal (port), The Haystack (Orarapa) Island (starboard), Rangitoto Island (port), Northern Leading Harbour Racing Buoy (Stbd), to Finish.
- 4.4 **PIC 50 - Beacon Marine Course:** approx. 54 nm
Start passing Browns Island (starboard), Waiheke Island (port), Ponui Island (starboard), Cow and Calf Islands (port), Waiheke Island (port), passing Motutapu Island (starboard), to Finish (Islington Bay entrance).
- PIC 50 - Railblaza Course:** approx. 37 nm
Start passing Browns Island (starboard), Waiheke Island (port), Tarahiki (Shag) Island (port), Passing Waiheke (Port), passing Motutapu Island (starboard), to Finish (Islington Bay entrance).
- PIC 50 - New World Victoria Park Course:** approx. 28 nm
Start passing Browns Island (starboard), Rocky Bay Buoy (port), The Noises (port), Rakino Island (port), passing Motutapu Island (starboard) to Finish (Islington Bay entrance).
Note: "The Noises" are defined as Otata Island and Motuhoropapa Island.

- 4.5 In the case of unfavourable weather, the SSANZ Committee Boat may fly Code Flag S in which case some or all divisions shall sail the short course. Divisions to sail the Short Course will be advised prior to the start on VHF Ch 77.

Short Courses:

PIC - Beacon Marine Short Course: approx. 38nm

Start, passing Motutapu Island (port), Tiri Channel Navy Buoy (starboard), The Haystack (Orarapa) (starboard), passing Motutapu Island (starboard), Northern Leading Harbour Racing Buoy (Port), to Finish.

PIC - Railblaza Short Course: approx. 25nm

Start, passing Motutapu Island (port), Rakino (starboard), The Haystack (Orarapa) Island (starboard), Motuihe Island (starboard), Brown Island (port), Motukorea Buoy (starboard), Northern Leading Harbour Racing Buoy (Port), to Finish.

PIC - New World Victoria Park Course: approx. 16nm

Start passing Motuihe (port), Sergeant Channel Buoy (starboard), Browns Island (port), Motukorea Buoy (starboard), Northern Leading Harbour Racing Buoy (Port), to Finish.

- 4.6 Railblaza 88 Young 88 division will race the following courses, always starting off the Railblaza Start

PIC 60 - Railblaza Course

PIC 100 - New World Victoria Park Course

PIC 50 - Railblaza Course

- 4.7 Beacon Marine M division All Multihulls will race the following courses, always starting off the Beacon Marine Start.

PIC 60 - Beacon Marine Course

PIC 100 - Railblaza Course

PIC 50 - Beacon Marine Course

THE START

- 5.1 Races will be started using RRS 26 with the warning signal made 5 (five) minutes before the starting signal.
- 5.2 The start line will be between a staff displaying an orange flag on the SSANZ Committee Boat and the Northern Leading Harbour Racing Buoy, with the SSANZ Buoy* splitting the line to form 2 sections.
Start Alpha (A) will be between the SSANZ Committee Boat and the laid SSANZ Buoy.
Start Bravo (B) will be between the SSANZ Buoy and the Northern Leading Harbour Racing Buoy.
*The SSANZ Buoy splits the line but does not form part of the line transit.
- 5.3 Inner distance mark (IDM): If laid, yachts shall not pass between the IDM and the SSANZ Committee Boat at any time.
- 5.4 Boats whose warning signal has not been made shall avoid the starting area during the starting sequence for other divisions.
- 5.5 A yacht starting later than 30 minutes after their starting signal will be scored Did Not Start (DNS). This changes RRS A4 and A5.
- 5.6 If a recall is signalled, the Race Committee may attempt to broadcast a yacht's name and/or sail number on VHF Channel 77. Failure to make a broadcast will not be grounds for a request for redress. This changes RRS 62.1(a).
- 5.7 The Race Officer may abandon racing after 1500 hrs on the day for any reason.

THE FINISH

- 6.1 PIC60 and PIC100 finish line will be between a staff displaying a blue flag on the SSANZ Committee Boat and Resolution Buoy (Ref Appendix B)
The finish line will be positioned approximately North to South with the finish boat at the south end of the line.
(Be advised that the depth shallows rapidly south of this line).
- 6.2 PIC50 race finish line will be positioned off the entrance to Islington Bay between a staff displaying a blue flag on the SSANZ Committee Boat and the laid Yellow SSANZ Buoy with a strobe attached. (Ref Appendix C)
The finish line will be positioned approximately Northeast to South West with the finish boat at the Northeast end of the line.
(Be advised of the shallow depth in the area East of the finish of Motutapu Island between Emu point and the finish).
- 6.3 It is each yacht's responsibility to identify itself and be acknowledged by the race committee when finishing.
At night yachts must illuminate their sail numbers.
You must take your own time using GPS time if you are unable to get an acknowledgement from the Race Committee.
This time will need to be emailed to racing@ssanz.co.nz as soon as possible after finishing.
The email must include your Boat Name and Sail Number with your finish time, and if possible, the time and name of a boat finishing near you.

TIME LIMITS

- 7.1 PIC 60 1200 hrs Sunday 2nd July 2023
PIC 100 1400 hrs Sunday 30th July 2023
PIC 50 2200 hrs Saturday 26th August 2023
- 7.2 Boats not finishing within the time limits will be scored Did Not Finish. This changes RRS 35 and A4.
- 7.3 If the start is postponed, the time limits above will be extended by the amount of the postponement period.

RACE POSTPONEMENTS

- 8.1 The Race Officer may postpone by any amount of time that they see fit.
- 8.2 The Race Officer may also make a postponement whereby the start will not take place before a certain time.
- 8.3 In the event a postponement is made more than 3 hours before the first scheduled start, this will be announced on VHF Channel 77 and posted on the SSANZ Official Noticeboard on the website.

SAFETY REGULATIONS

- 9.1 All forms of navigational aids, GPS, radar, autopilots, etc are permitted. GPS should be regarded as a navigational aid, not a navigational system.

EQUIPMENT AND EQUIPMENT CHECKS

- 10.1 A boat or equipment may be inspected at any time for compliance with the class rules, sailing instructions and safety certificates. On the water, a boat can be instructed by a Race Committee Equipment Inspector or Measurer to proceed immediately to a designated area for inspection.

RADIO REGULATIONS

- 11.1 All yachts MUST identify themselves as starters to the Race Officer by calling SSANZ Sports Radio on Channel 77 prior to the start and must receive acknowledgement from the race committee.
If there is an issue with Channel 77, competitors may be required to use Channel 04.
- 11.2 SSANZ will monitor Channel 77 from 0730 until 10 minutes after the last start, and again during the finishing of all competitors.
- 11.3 You will receive a race day text from SSANZ for each of the races
All boats are required to reply to the SSANZ text after passing and/or rounding the marks identified below.
Your reply must contain MARK and the mark number you have rounded. For example 'Mark 1'.
If there is no cellphone coverage at the required report position, text as soon as you have coverage.
You will receive a confirmation text back from SSANZ.
In the event you cannot text or do not receive a response from SSANZ you are required to call Coast Guard on VHF 64 or 60 and file a position report.

PIC 60 - Beacon Marine Course

PIC 60 - Railblaza Course

PIC 60 - New World Victoria Park Course

Mark 1 - Motuora Island, **Mark 2** - Gannet Rock

Mark 1 - Motuora Island

Mark 1 - Navy Buoy (Tiri)

PIC 100 - Beacon Marine Course

PIC 100 - Railblaza Course

PIC 100 - New World Victoria Park Course

Mark 1 - Cow & Calf Islands, **Mark 2** - Flat Rock

Mark 1 - Motuokino Island (Shag Rock), **Mark 2** - The Noises

Mark 1 - Gannet Rock, **Mark 2** - Shearer Rock Cardinal

PIC 50 - Beacon Marine Course

PIC 50 - Railblaza Course

PIC 50 - New World Victoria Park Course

Mark 1 - Cow & Calf Islands

Mark 1 - Thumb Point, Waiheke

Mark 1 - The Noises

Short course

PIC - Beacon Marine Short Course

PIC - Railblaza Short Course

Mark 1 - Navy Buoy (Tiri)

Mark 1 - Haystack (Orarapa) Island

- 11.4 All boats are required to call SSANZ Sports Radio on VHF 77 on the approach to Northern Leading Racing Buoy - This call is not required for the PIC 50 race.
- 11.5 All boats must call SSANZ Sports Radio on VHF Channel 77 while on final approach to the finish.
Failure to make this call may result in a DNF.
- 11.6 A boat that retires from a race shall notify SSANZ via a RETIRED text message, a call to Coastguard on VHF channel 64 or 60 or alternately by phoning the Race Officer as soon as possible after retiring
- 11.7 Yachts failing to comply with all reporting requirements will receive a 5% time penalty for every report they do not complete.
- 11.8 Voicemails and text will not satisfy communication requirements for any race, unless they have been acknowledged with a reply from SSANZ.
- 11.9 A yacht shall not receive radio communications that are not available to all yachts. This restriction applies to mobile telephones. Boats are permitted to communicate with the media for the purpose of publicity and promotion but not to gain information to help their performance.
- 11.10 ALL YACHTS shall maintain a watch on VHF Channel 16 while racing.

TRASH DISPOSAL

- 12.1 Boats shall not put rubbish in the water.

ENGINE USE

- 13.1 No yacht shall be **under power or tow after their** Preparatory Signal.
- 13.2 Yachts are permitted to run their engines during the race for the purpose of charging batteries or other functions (i.e. canting keel, operate winches) but the engine power shall not cause the propeller to rotate.

DISCLAIMER OF LIABILITY

- 14.1 Competitors participate in all races entirely at their own risk, refer to Rule 4 of the RRS. SSANZ will not accept any liability for material damage or personal injury or death sustained in conjunction with or prior to, during or after the race.

INSURANCE

- 15.1 Each yacht shall be insured with valid third-party liability insurance with a minimum cover of \$5,000,000 per event.

TRACKING

- 16.1 Yachts are required to operate a Predictwind tracker on a smartphone or similar device whilst racing.

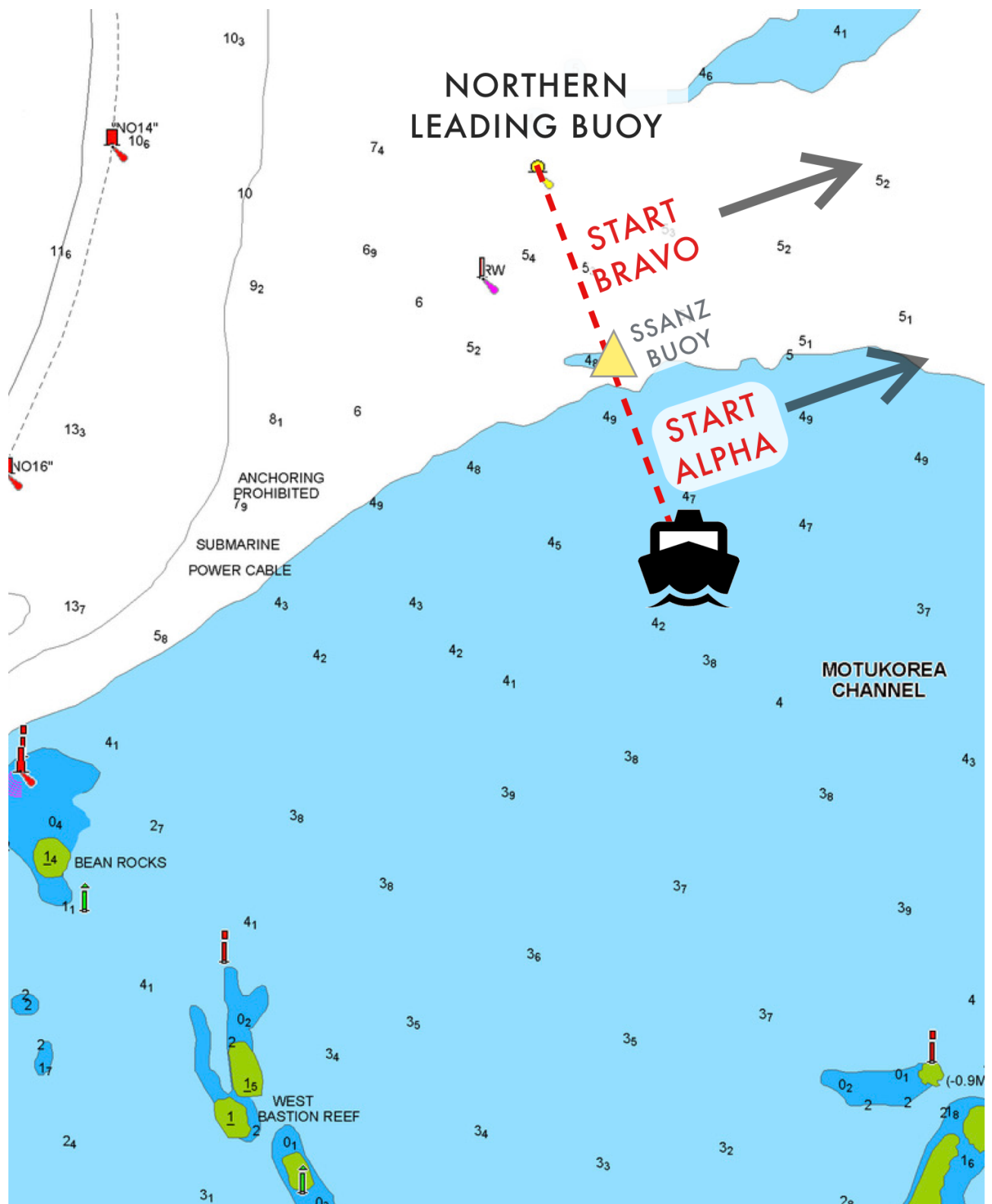
Failure to have your tracker running at the start of the race will result in DSQ

<https://www.predictwind.com/tracker/>

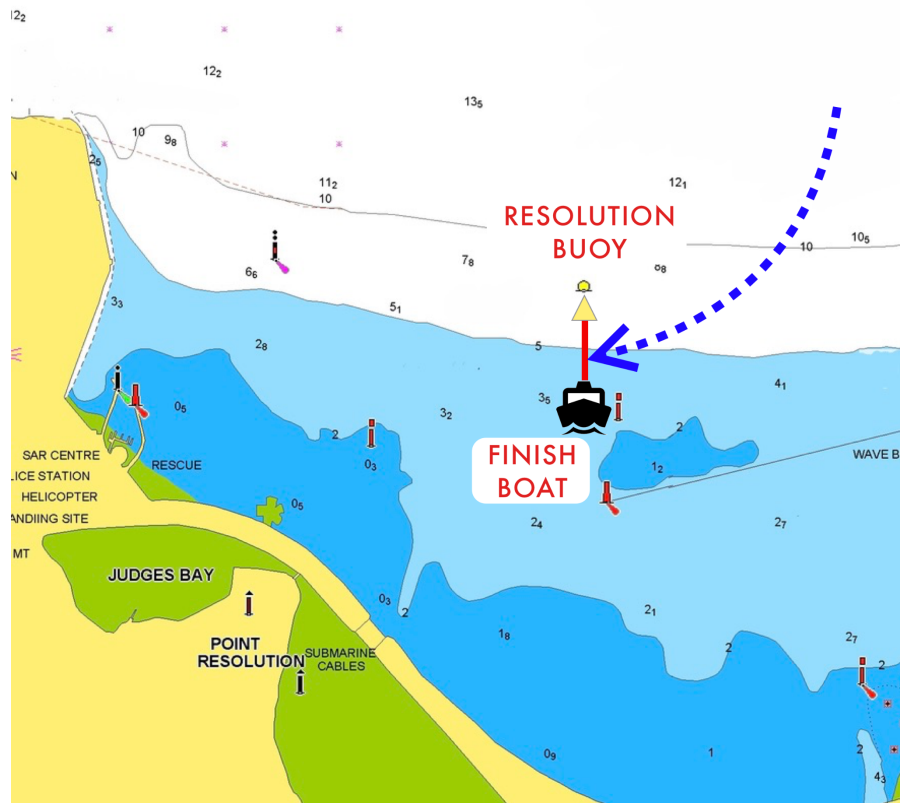
ADDITIONAL INFORMATION

Official Website: www.ssanz.co.nz
Contact Email: racing@ssanz.co.nz
Garry Jolliffe (Race Officer): Ph: 027 434 8186

Start Line



Appendix B PIC60 & PIC100 Finish Line



Appendix C PIC50 Finish Line

