

## Notice to Competitors

# SSANZ 2020 Chains, Ropes and Anchors Enduro

**Amendment #3 to SI's  
Issued 8 October 2020**

Remove:

~~4.4 Cruising Course: Start, Browns Is to Starboard, Ponui Is to Port, Gannet Rk to Port to Finish.  
Course length approximately 40 nm.~~

~~6.1 The finish line will be between Pakatoa Wharf and a Vessel displaying a blue flag anchored  
to the west of the wharf or the SSANZ yellow buoy with a flashing light~~

Replace with:

4.4 Cruising Course: Start, Browns Is to Starboard to Finish. *Course length approximately 20 nm.*

6.1a The finish line will be in the vicinity of Shark Bay, Ponui Island as indicated in Appendix A.

6.1b The finishing line will be between a staff displaying a blue flag on the race committee vessel  
and a laid SSANZ bouy with a flashing light. The finish line will run East to West with the  
finish boat at the Eastern end of the line.

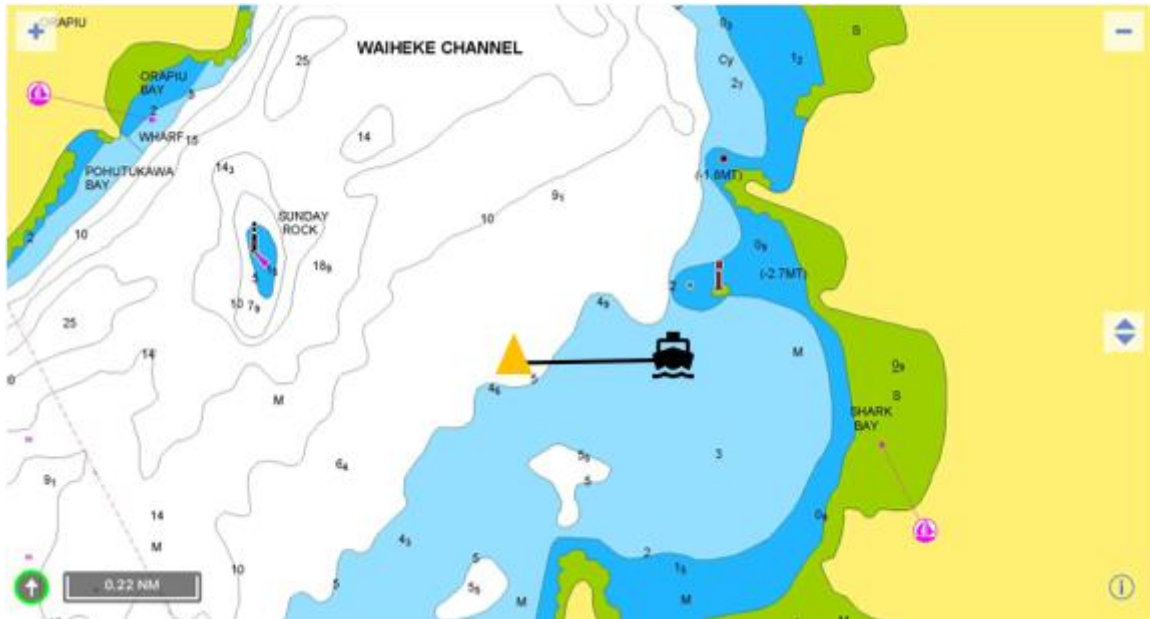
Cruising Vessels are to cross the finish line in a South to North direction

Shorthaul Vessels are to cross the finish line in a North to South direction

In the Event the Finish boat is not on station, the finish line will be between Sunday Rock and  
the red isolated danger mark to the east. Appendix B

You will be required to take your own time and email it to [racing@ssanz.co.nz](mailto:racing@ssanz.co.nz)

Appendix A



Appendix B

