

LEWMAR[®] 2020 SSANZ TRIPLE SERIES

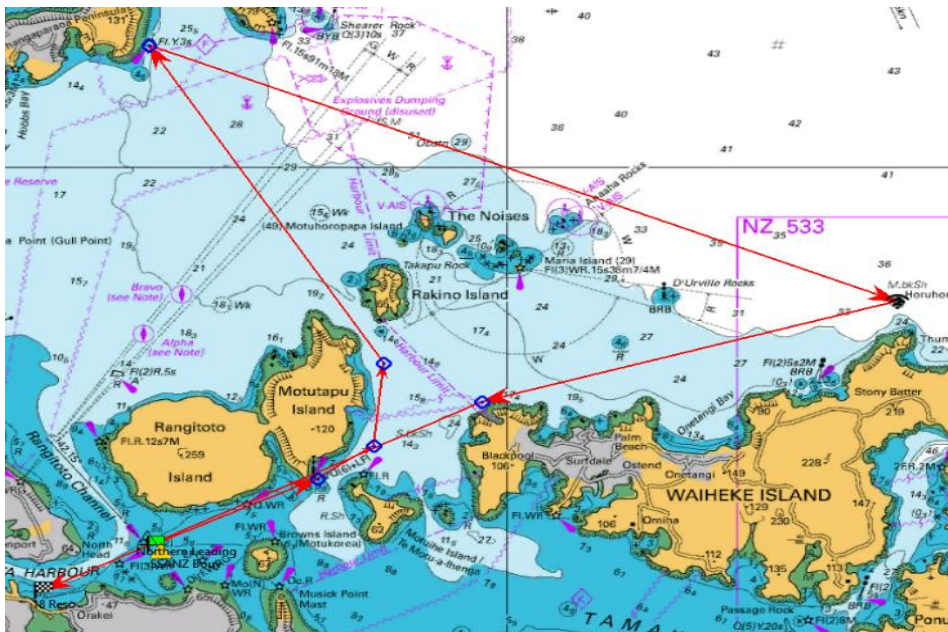
Course Information Sheet

These sheets are for reference only and NOT TO BE USED FOR NAVIAGTION – read the sailing instructions to ensure you are sailing the correct course!

Lewmar 60 PIC Marine Insurance Course

Start passing Motutapu Island (port), Tiri Channel Navy Buoy (starboard), Gannet Rock (starboard), passing Motutapu Island (starboard) to finish.
(approx. 52nm)

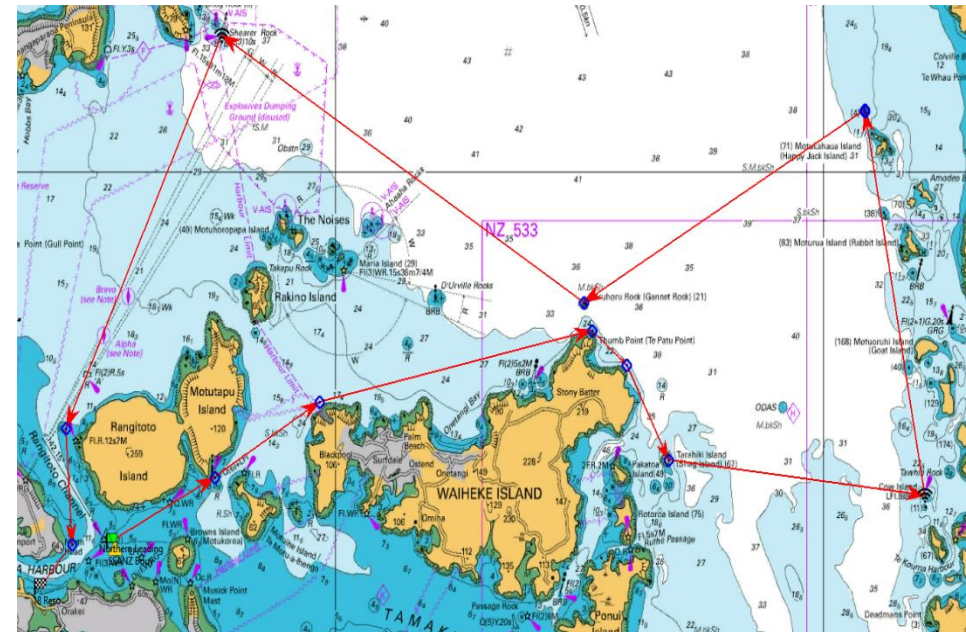
Txt SSANZ on 021 0880 1160 after passing and/or rounding: Gannet Rock



Lewmar 100 PIC Marine Insurance Course

Start passing Motutapu Island (port), Waiheke Island (starboard), Tarahiki (Shag) Island (port), Cow and Calf Islands (port), Motupotaka (Black Rocks) (port), Gannet Rock (starboard), Shearers Rock Buoy (port), Rangitoto Island (port), to finish. (approx. 79nm)

Txt SSANZ on 021 0880 1160 after passing and/or rounding: Cow & Calf Islands and Shearer Rock



LEWMAR®

Lewmar, the world's leading manufacturer of marine deck hardware, has an extensive product range covering winches, windlasses, anchors, hardware, hatches and portlights. Lewmar is now available through Safety At Sea, Kiwi Yachting and all good chandleries.

LEWMAR RACE+ Winch
The new EVO® RACE winches combine EVO® architecture with lightweight aluminium with all-new top components to offer a sleeker and racier design, with the same trusted durability.



Lewmar 50 PIC Marine Insurance Course

Start passing Browns Island (starboard), Waiheke Island (port), Tarahiki (Shag) Island (port), Waiheke to Port, to finish. (approx. 44nm).

Txt SSANZ on 021 0880 1160 after passing and/or rounding: Thumb Point, Waiheke



At PIC Insurance Brokers, we're proud to be 100% NZ owned and operated. When you work with PIC you form a relationship with locals who understand the New Zealand Market and the Kiwi way of life. We're passionate about sailing and our expert Marine team have the knowledge and expertise to give you great advice that delivers the best outcomes for you. Our strong relationships with a wide range of major insurers means that our team can guide you to a comprehensive cover that's tailored to what you need.

