

# LEWMAR® 2020 SSANZ TRIPLE SERIES

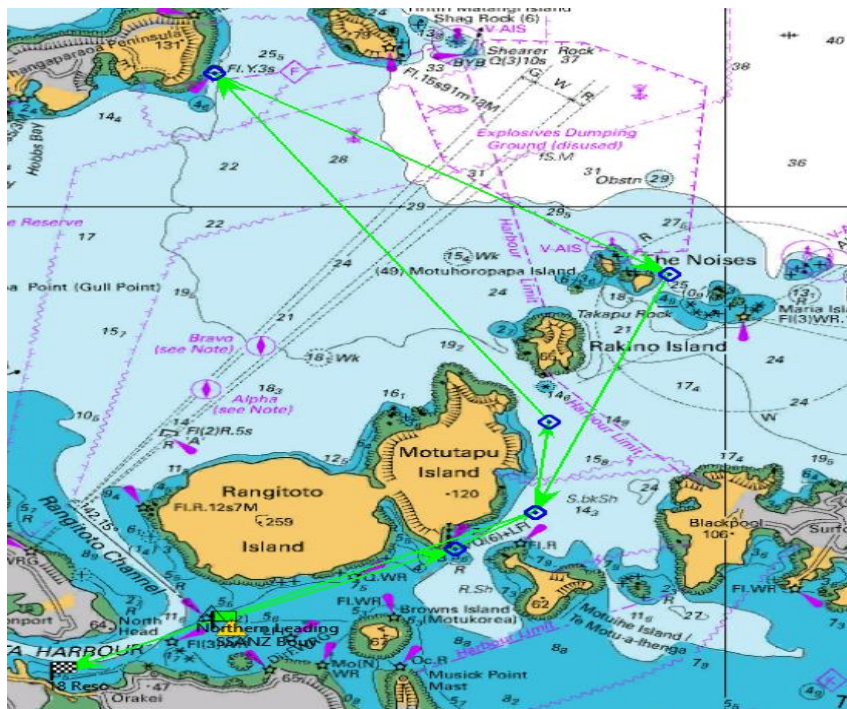
## Baltic Course Information Sheet

These sheets are for reference only and NOT TO BE USED FOR NAVIAGTION – read the sailing instructions to ensure you are sailing the correct course!

### Lewmar 60 Baltic Course

Start passing Motutapu Island (port), Tiri Channel Navy Buoy (starboard), The Noises (starboard), passing Motutapu Island (starboard) to finish. (approx. 38nm)

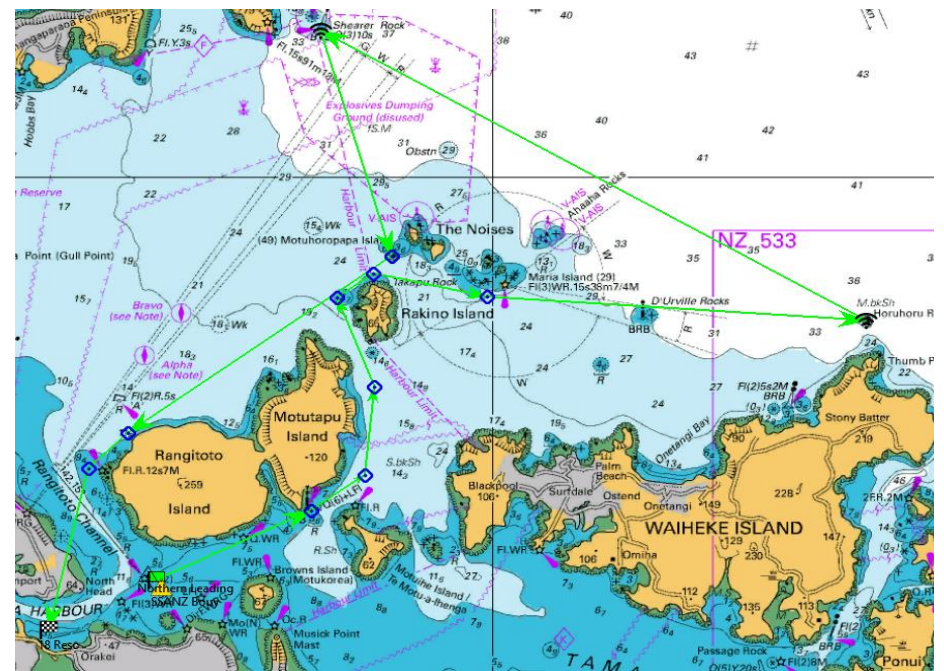
Txt SSANZ on 021 0880 1160 after passing and/or rounding: Tiri Navy Buoy



### Lewmar 100 Baltic Course

Start passing Motutapu Island (port), Rakino Island (starboard), Gannet Rock (port), Shearers Rock Buoy (port), The Haystack (Orapapa) Island (starboard), Rangitoto Island (port), to finish (approx. 55nm).

Txt SSANZ on 021 0880 1160 after passing and/or rounding: Gannet Rock and Shearer Rock



# LEWMAR®

Lewmar, the world's leading manufacturer of marine deck hardware, has an extensive product range covering winches, windlasses, anchors, hardware, hatches and portlights. Lewmar is now available through Safety At Sea, Kiwi Yachting and all good chandleries.

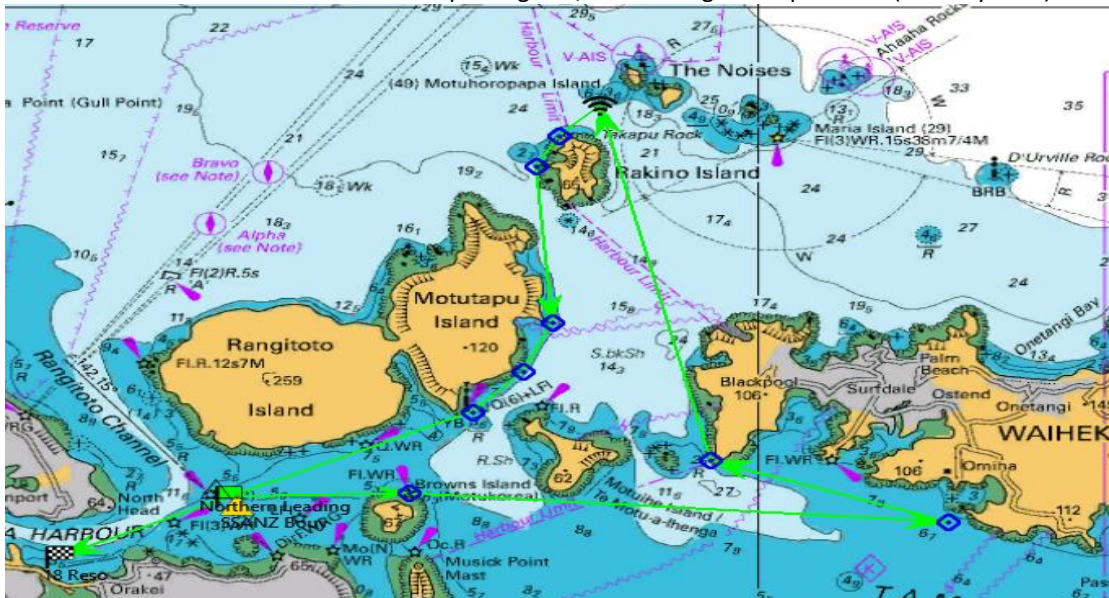
**LEWMAR RACE+ Winch**  
 The new EVO® RACE winches combine EVO® architecture with lightweight aluminium with all-new top components to offer a sleeker and racier design, with the same trusted durability.



## Lewmar 50 Baltic Course

Start passing Browns Island (starboard), Rocky Bay Buoy (port), The Haystack (Oropapa) Island (port), Rakino Island (port) to finish (approx. 34nm)

Txt SSANZ on 021 0880 1160 after passing and/or rounding: Orarapa Island (The Haystack)



Baltic is a Swedish company that has made lifejackets since 1977. For more than 40 years they have kept to the philosophy that it is impossible to compromise quality and functionality, and this philosophy has made them the largest manufacturer in Europe with distributors in over 50 countries.



**Baltic Legend SLA**  
 The Legends series of lifejackets incorporate ergonomic fit and comfort when inflated. The SLA comes with a spray hood, strobe light and AIS attachment points.